



BLUE
SAVANNAH

Sky



discover • explore • experience

Mpumalanga





Mpumalanga (Zulu name for "the place where the sun rises") is a province in eastern South Africa, bordering the nations of Swaziland and Mozambique. It embraces the southern half of Kruger National Park, a huge nature reserve with abundant wildlife including big game. The province's iconic Blyde River Canyon, among the world's largest, is known as a green canyon because of its subtropical foliage.

The Barberton Makhonjwa Mountainland is situated in Mpumalanga Province which is in the north-eastern part of South Africa. The site comprises 40% of the Barberton Greenstone Belt, one of the world's oldest geological structures.

- **Capital City:** Nelspruit is the capital city of Mpumalanga Province, and is also known as Mbombela.*
- **Airport:** Kruger Mpumalanga International Airport also known as Nelspruit Airport (KMIA / MQP), Hoedspruit Airport (HDS), Skukuza Airport (SZK)*
- **Best time to visit:** The weather is often at its best in March and April, when there is little wind or rain and temperatures are not too stifling. By contrast, the spring months of September or October are the best time for game viewing in Kruger and other reserves.*
- **Food specialities:** braai - which means barbecued - beef, lamb, chicken, pork, wild meat and freshwater fish with a lot of barbecued vegetables, shaba or spicy tomato relish, and the staple meal pap or maize meal porridge*
- **Language:** siSwati, the language of neighbouring Swaziland, isiZulu, isiNdebele, Northern Sotho and Xitsonga. English and Afrikaans are also widely spoken.*

Natural Attractions in Mpumalanga



1. The Blyde River Canyon

The Blyde River Canyon is the largest green canyon in the world, thus making it one of the most visited attractions in South Africa. There are three ways in which you can visit the Canyon: from the viewpoints at the Three Rondavels, white river rafting, flying over it with a helicopter or in a microlight.



Horseshoe Falls

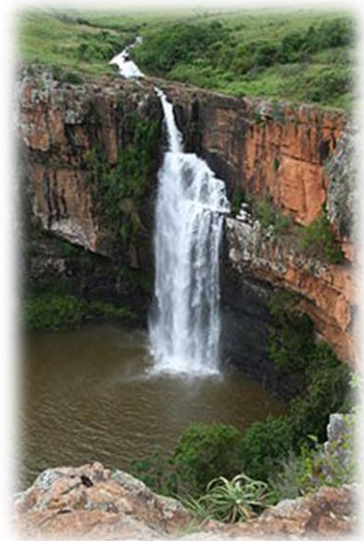
Mac-Mac Falls



Lisbon Falls



Berlin Falls



2. Waterfalls

In Mpumalanga, there are tons of waterfalls, which are worth visiting like the Horseshoe Falls, the Lone Creek Falls, the Mac-Mac Falls, the Lisbon Falls and the Berlin Falls.

Natural Attractions in Mpumalanga



3. The Kruger National Park

The Kruger National Park, which is one of the largest national parks in Africa is home to the Big Five animals and the Big Six Birds. The Park is a must visit attraction in South Africa.



4. God's Window

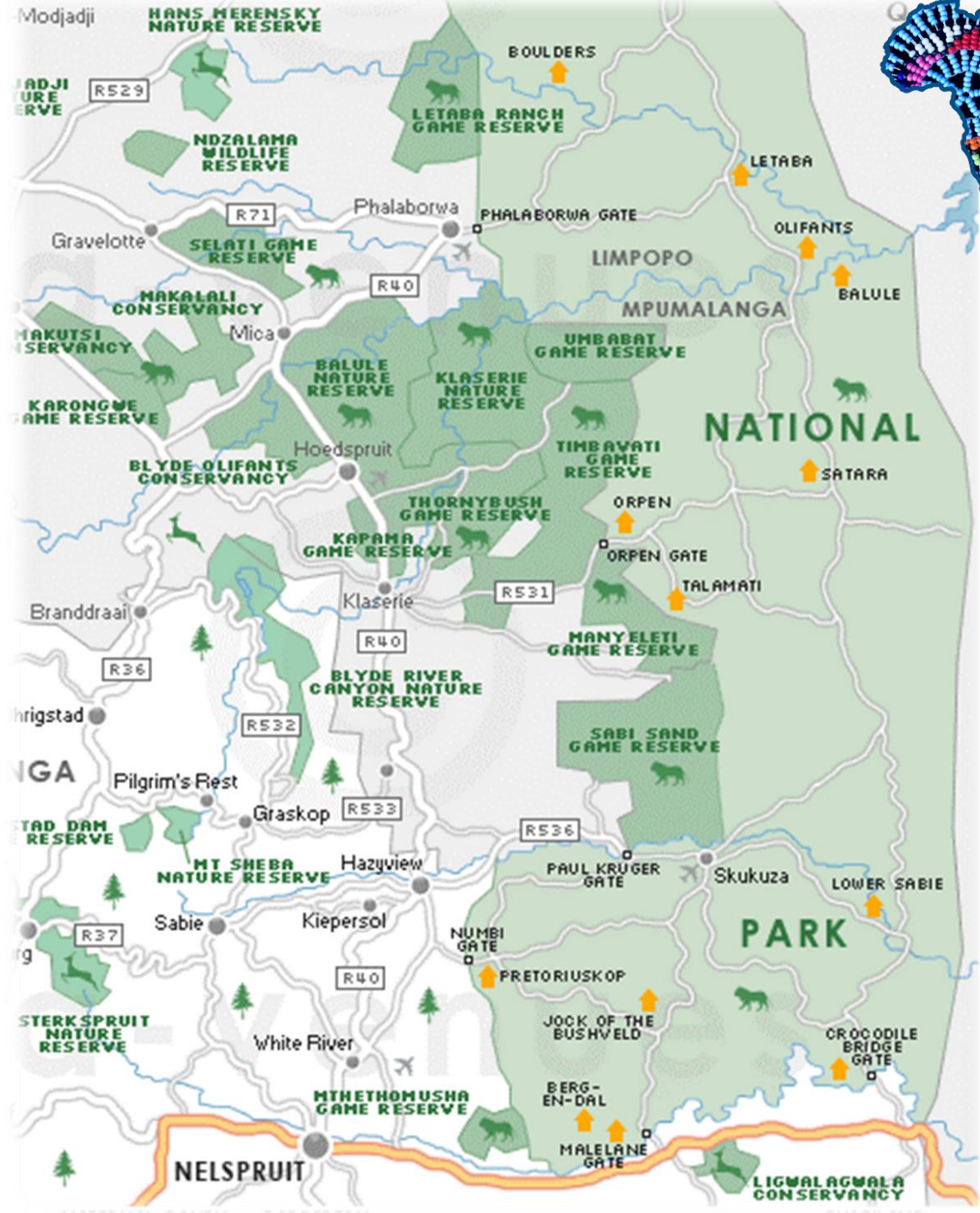
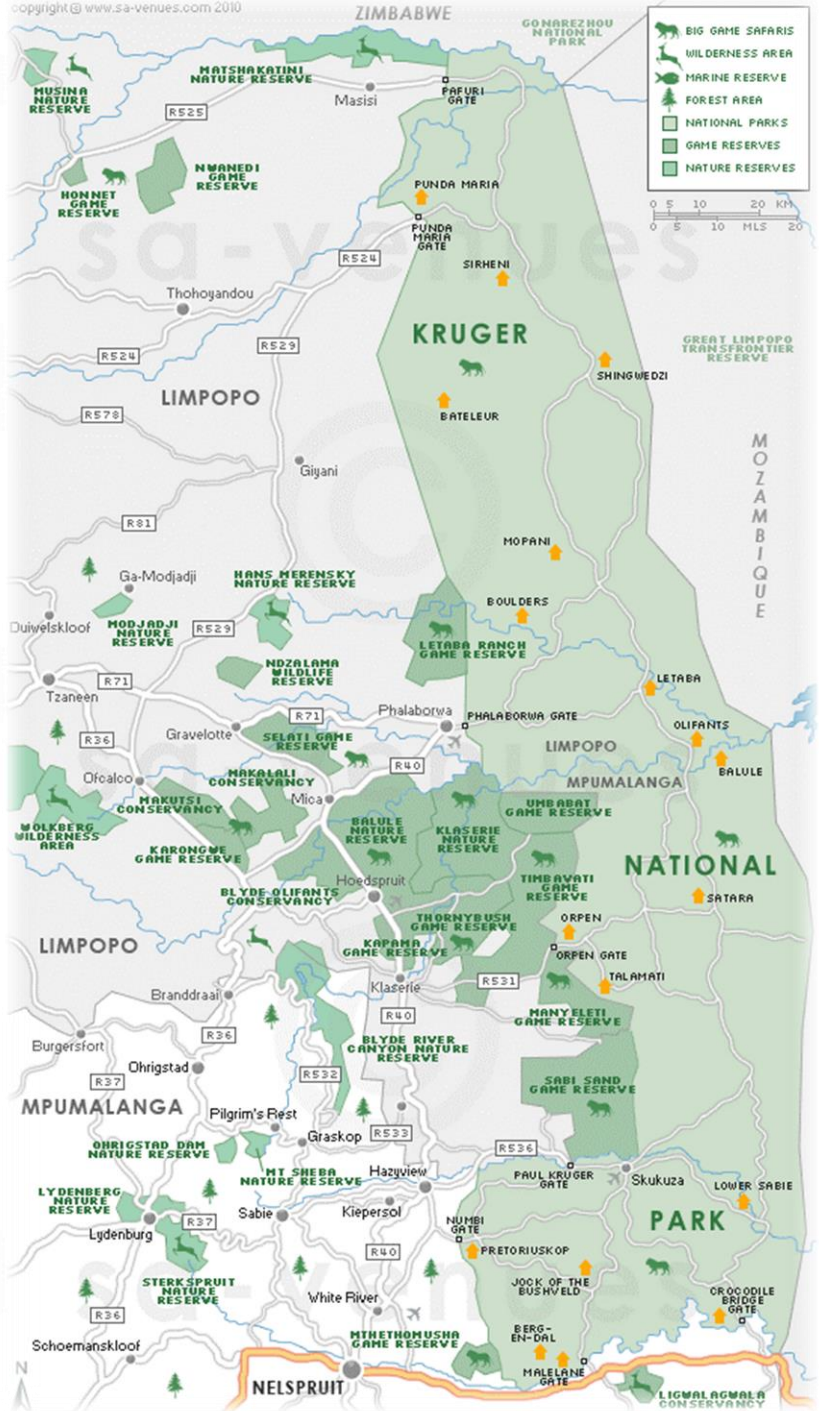
God's Window has no frame, no glass and no handles; it is simply a view so magnificent. God's Window has a panoramic view of: the Lowveld, over Mountains, River and Waterfalls.

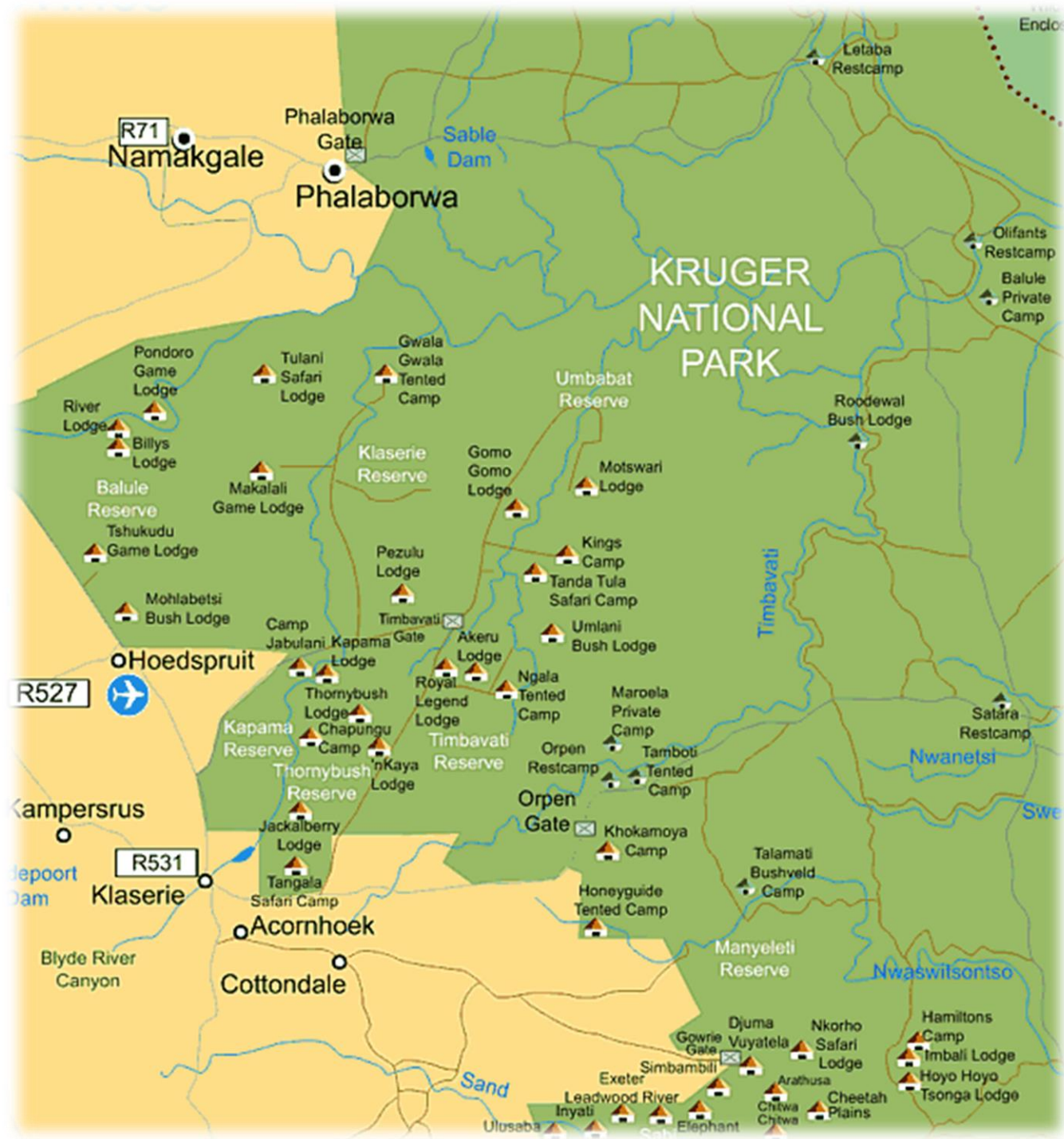


5. Bourkes's Luck Potholes

Visit the natural wonder called "Bourke's Luck Potholes". These Potholes have been formed over decades, due to the water that swirls over the rock formations that meet at the Treur River and the Blyde River.









KRUGERPARK.COM
0861 KRUGER

- Legend**
- Highway
 - Tar Road
 - Dirt Road
 - Restcamp
 - Caravan/Camping
 - Petrol Station
 - Private Lodge
 - Wilderness Camp
 - Entrance Gate
 - Picnic Spots
 - Lookout Point
 - Airport
 - Railway
 - Waterholes/pans
 - Point of Interest
 - River
 - No Entry

SOUTH AFRICA
(Mpumalanga Province)